

SANIJET®

PIPELESS HYDROMASSAGE



PIPELESS™ PEDICURE BATH

OWNER'S MANUAL

Models: SSB2-S115-XX (115v, 60Hz)

Models: SSB2-S230-XX (230v, 50Hz)

Purity is Premium

SANIJET®

PIPELESS HYDROMASSAGE

Dear Valued Customer:

Thank you for purchasing the SANIJET Pipeless™ Pedicure Bath. As the innovator of Pipeless™ hydromassage, SANIJET® was founded on the principle that, in spa bath and pedicure bath systems, purity is premium.

SANIJET's Reflexology Foot Baths, Pedicure Sinks and Portable Foot Baths provide safe hydromassage, quiet operation, and the ability for quick and easy system disinfection.

Please read and follow all of the instructions contained in this Manual before installing, operating, or maintaining your new SANIJET Pipeless™ pedicure bath.

Before proceeding, please take a few minutes to complete the warranty registration enclosed in your Owner's packet and submit it to SANIJET at the address provided on the form.

If you have questions concerning installation, operation or maintenance, please contact a SANIJET technical service representative toll-free at (877) 934-0477.

Sincerely,
SANIJET®

Table of Contents

General Information	1
Limited Commercial Warranty	2
Safety	3
Features and Specifications	4
Installation: Electrical	5
Installation: Standard Self-Rimming	6
How to Remove for Service	8
Operating Instructions.....	9
Dry Run Protection.....	10
SANIJET Pipeless™ Disinfection	11
Troubleshooting	12

General Information

This product was completely water-tested, securely packaged and in good condition when delivered to the carrier. Immediately upon receipt, inspect the unit for any obvious damage BEFORE installing. Retain the shipping carton and packing material to reuse in case service becomes necessary. Should the inspection reveal damage or defect, do not install the unit.

SANIJET's responsibility for shipping damage ceases upon delivery of the product in good condition to the carrier. It is the responsibility of the recipient to inspect the packaging for damage. Any damage claims must be filed with the carrier within 2 business days from receipt of shipment. All returns will be refused unless accompanied by a Return Material Authorization (RMA) Form.

For definitions of warranty coverage and limitations, refer to the published warranty information on Page 2.

Limited Commercial Warranty

PEDICURE EQUIPMENT LIMITED COMMERCIAL WARRANTY

PRODUCTS COVERED: Pedicure Sinks, Reflexology Foot Baths and Portable Foot Baths, manufactured by SANIJET and put to commercial use.

PERSONS COVERED: The original purchaser for commercial use (Customer).

WARRANTY PERIOD: One (1) year on all parts and components beginning on the date of original purchase for use or two (2) months after the product leaves SANIJET's facility, whichever comes first. SANIJET may require Customer to document the date of original purchase and provide serial number(s) of the product(s).

SCOPE OF COVERAGE: This warranty only covers problems reported to SANIJET during the warranty period. Coverage is SUBJECT TO the exclusions below. If a tub shell manifests a defect or fails to properly perform under ordinary use within the warranty period, SANIJET will repair or replace it at SANIJET's election, but shall have no responsibility with respect to removal, reinstallation or transport of the tub shell. If any other part or component manifests a defect or fails to properly perform under ordinary use during the warranty period, SANIJET will provide repair or replacement parts or components at its election. As a condition to warranty service, SANIJET may require Customer to return defective/malfunctioning parts and may charge Customer for the repair or replacement parts or components subject to a full refund upon receipt of the return parts and verification of the problem. THE REMEDY PROVIDED IN THIS SECTION IS CUSTOMER'S EXCLUSIVE REMEDY FOR ANY DEFECT OR MALFUNCTION OF THE PRODUCT.

SHIPPING: SANIJET will pay freight on a least-cost basis to ship repair/replacement parts to destinations within the continental United States.

EXCLUSIONS: This warranty does NOT cover a) metallic plated hardware, light bulbs or fading from exposure to direct sunlight; b) failure, damage or defect caused by any of the following after the product leaves SANIJET's factory: mishandling, abuse, misuse, neglect, accident or natural disaster, normal wear and use that does not affect the product's function; failure to maintain the product as recommended by SANIJET (See Owner's/Installation manual); or c) any part that has been altered or tampered with, including but not limited to alteration or tampering with any labeling.

MAKING CLAIMS: Report problems to SANIJET's customer service department.

Telephone: 877-934-0477 or 972-745-2283 Fax: 214-352-0348 E-mail: info@sanijet.com

DEALER WARRANTIES: No dealer or distributor has any authority to bind SANIJET to any other warranty or any change or addition to this warranty.

SOLE REMEDY / LIMITATION OF DAMAGES: THE REMEDY PROVIDED ABOVE UNDER "SCOPE OF COVERAGE" IS CUSTOMER'S EXCLUSIVE REMEDY FOR ANY DEFECT OR MALFUNCTION OF THE PRODUCT. To the fullest extent allowed by law, SANIJET disclaims and excludes liability for consequential and incidental damages including, but not limited to, loss of use, lost rentals, lost profits, loss of business reputation, out of pocket expenses, damage to property other than the warranted product, mental anguish and punitive damages. **Some states limit or do not allow the exclusion or limitation of incidental or consequential damages, so some or all of these limitations may not apply to you.**

STATE LAW RIGHTS: **This warranty gives you specific legal rights, and you may also have other rights which vary from state to state.** THE DURATION OF ANY IMPLIED WARRANTIES UNDER STATE LAW, INCLUDING THE IMPLIED WARRANTIES OF MERCHANTABILITY AND FITNESS FOR A PARTICULAR PURPOSE, IS LIMITED TO THE WARRANTY PERIOD DESCRIBED ABOVE. **Some states do not allow limitations on how long an implied warranty lasts, so this limitation may not apply to you.**

Safety

INSTRUCTIONS PERTAINING TO A RISK OF FIRE, ELECTRIC SHOCK OR INJURY TO PERSONS

SAVE THESE INSTRUCTIONS

WARNING: WHEN USING THIS UNIT, BASIC PRECAUTIONS SHOULD ALWAYS BE FOLLOWED, INCLUDING THE FOLLOWING:

1. READ AND FOLLOW ALL INSTRUCTIONS
2. **WARNING:** Risk of accidental injury or drowning: Children or handicapped persons should not use pedicure spa without adult supervision.
3. **WARNING:** To avoid injury, exercise care when using a pedicure spa.
4. **WARNING:** Risk of electric shock: Do not permit electric appliances (such as a hair dryer, lamp, telephone, radio, or television) to be within 5 ft (1.5 m) of this unit.
5. **DANGER: RISK OF ELECTRIC SHOCK:** This unit should be grounded. Connect only to a dedicated 15 amp circuit that is protected by a Ground Fault Circuit Interrupter (GFCI). A GFCI should be provided by the electrician and should be tested on a routine basis. To test the GFCI, push the test button. The GFCI should interrupt power. Push the reset button. Power should be restored. If the GFCI fails to operate in this manner, there is a possibility of a ground fault, or defective GFCI. **DO NOT USE THE UNIT.** Have the problem corrected by a qualified service representative or an electrician before using.
6. **WARNING:** Use the Pipeless™ Pedicure Bath only for its intended purpose: a fill and drain indoor appliance for foot and ankle hydromassage. **DO NOT** use attachments not recommended by manufacturer.
7. **RISK OF ELECTRIC SHOCK:** Disconnect from the electrical supply before servicing.

WARNING

1. **DO NOT** reach for any electrical object that has fallen into water. Unplug immediately.
2. **DO NOT** drop or insert anything into any jet opening.
3. **DO NOT** operate this unit without the complete jet assembly installed or without water filled 1 in (3 cm) above the jets .
4. **DO NOT** overfill the basin.
5. **DO NOT** stand on or in the basin, or on the foot rest.
6. **DO NOT** leave this appliance unattended when in operation.
7. Keep the electrical cord away from heated surfaces.
8. Connect this appliance only to a properly grounded outlet (See Grounding Instructions on Page 5).
9. To avoid injury, exercise care when entering or exiting the pedicure spa.
10. It is important that you clean and disinfect the jets and basin after every use. Unless thoroughly cleaned after each use, bath residue will buildup within the jets and on the surface area of any whirlpool pedicure spa, which can promote the growth of infectious bacteria.
11. Hydromassage should be pleasant and comfortable. Should you experience any pain or discomfort while using the pedicure spa, discontinue use immediately and consult your physician.
12. Consult your physician if you are diabetic, have poor circulation, or if any area of your feet or legs is inflamed, has an open wound or if you have any other questions about whether you should be using hydromassage equipment.
13. SANIJET recommends a qualified plumber and electrician install your Pipeless™ Pedicure Bath.
14. Water supply temperature to the Pipeless™ Pedicure Bath **MUST NOT** exceed 106° F (41° C). Water temperature in excess of 106° F (41° C) may be injurious to users health. Check water temperature and adjust prior to use.

INSTALLER / OWNER BEARS ALL RESPONSIBILITIES TO COMPLY WITH ALL STATE AND LOCAL CODES WHEN

INSTALLING THIS PRODUCT. FAILURE TO COMPLY WITH THESE INSTRUCTIONS MAY VOID WARRANTY.

Features and Specifications

Model SSB2-S115 / SSB2-S230 Pipeless™ Pedicure Bath



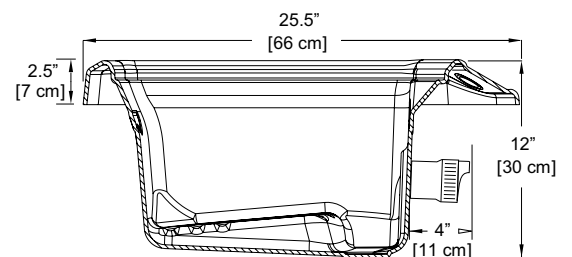
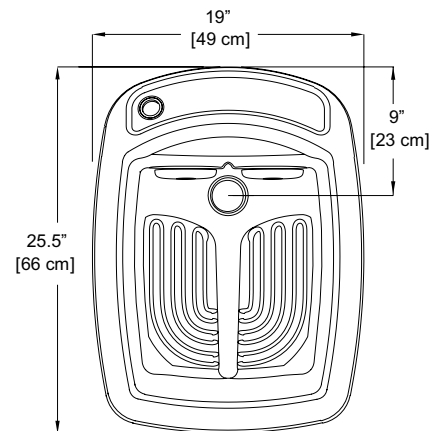
FEATURES

- Two Patented, High Performance, Ultra-Quiet Pipeless™ Jets
- Advanced Seal-less Technology Designed for Maintenance-Free Use
- Complete Hygiene with Simple Five Minute Disinfection Protocol
- Durable, High Gloss Acrylic Construction in White or Biscuit
- Designed for drop-in installation.

SPECIFICATIONS

- Width: 19.0" (49 cm) x Length: 25.5" (66 cm) x Height: 12.0" (30 cm)
- Material: Structurally reinforced cast acrylic
- Operating Capacity: 4.5 Gallons (17 L)
- Approximate Ship Weight: 42 lbs (19 kg)
- Water Flow Rate: 14 gallons per minute (53 L)
- Electrical Requirements:
 - SSB2-S115 115 V / 60 Hz, 2 Amp, 3 foot power cord & NEMA 5-15 plug (ETL Listed, North America)
 - SSB2-S230 230 V / 50 Hz, 1 Amp, junction box for hard wire connection (CE Compliant)
- Plumbing Requirements:
 - Drain Outlet: 1.5"

DIMENSIONS



Product Specifications Are Subject To Change Without Notice.

Installation: Electrical

INSTRUCTIONS PRIOR TO USE

WARNING

WHEN USING ELECTRICAL PRODUCTS, BASIC PRECAUTIONS SHOULD ALWAYS BE FOLLOWED, INCLUDING THE FOLLOWING:

1. **IMPORTANT:** Read complete instructions before use.
2. This Pipeless™ Pedicure Bath requires either 115 V, 60 Hz or 230 V, 50 Hz, 2 AMP service and must be connected to a circuit protected by a permanent Ground Fault Circuit Interrupter (GFCI). Grounding is required.
3. Always turn off electrical breaker at breaker box before installing or removing pedicure unit or electrical components.

ELECTRICAL CONNECTIONS

Connect only to a circuit protected by a Ground Fault Circuit Interrupter (GFCI). It is recommended that all electrical service connections be made by a licensed electrician.

115 V, 60 Hz unit comes with a 3 foot long cord with grounded male plug (NEMA 5-15) for plugging into a 3 prong wall outlet. Wall outlet should be accessible for easy access for plugging or unplugging 3 foot power cord prior to unit service. Power cord should be positioned as to not contact floor of pedicure unit's enclosure. Turn off circuit breaker before installing or removal of unit or servicing electrical components

230 V, 50 Hz unit is provided with a 2"x4" junction box with three bare leads for hard-wire connections. Conductor Insulation color inside junction box is as follows: Green/Yellow (Ground), Blue (Neutral), Brown (Line) Junction box should be accessible for connecting service line or disconnecting prior to unit service. Service cord should be positioned as to not contact floor of pedicure unit's enclosure. Turn off circuit breaker before installing or removal of unit or servicing electrical components.

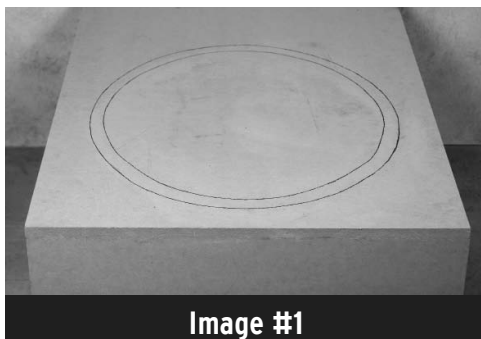
GROUND LINE INSTALLATION

A bonding conductor, #8 AWG solid copper ground wire must be routed from earth ground (metal stake driven into ground or copper plumbing clamp) to pedicure unit's lug connector provided on wire connecting pump motor ground studs. (#8 solid copper, metal stake or plumbing clamp not provided)

Installation: Standard Self-Rimming

1. The SANIJET Pipeless™ Pedicure Bath is designed to be installed as a self-rimming or undermount appliance into a raised platform.
2. To cut out the appropriate sized hole in the mounting platform in which the pedicure sink will be installed, place the sink upside down* over the position it will be mounted making sure that the ON/OFF button is closest to the operator's position. Lightly trace the outline of the tank onto the surface to be cut. Remove the sink and then draw an outline 3/4 in (2 cm) within the border of the traced pattern. (See Image #1) Cut out the area of the smaller pattern. (See Image #2)

*Template available upon request.



Drain Cover
Strainer Body
(Apply bead of plumber's
putty to underside of flange)



Seal



1 1/2 PVC Socket - Female

Image #3

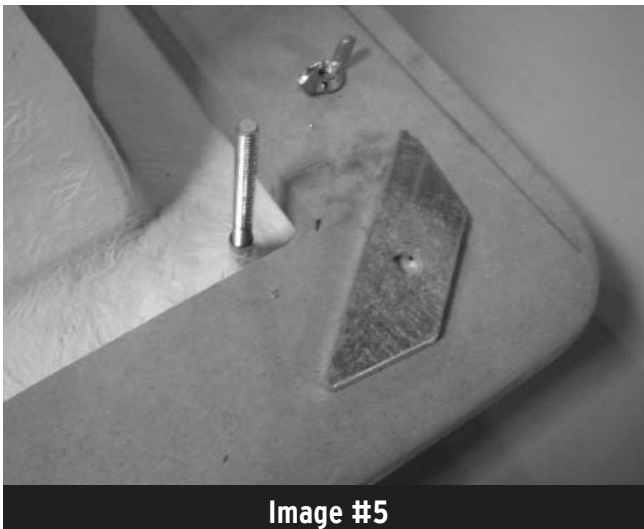
3. Install Drain Assembly
 - a) If using **DK-D100** purchased separately from SANIJET®, install the drain assembly on the pedicure bath (See Image #3). Apply a bead of plumber's putty to the underside of the strainer body to prevent water from seeping under its chrome plate. Secure the drain and seal beneath the drain hole in the pedicure sink by screwing in the strainer body. Tightly thread the strainer body into the 1 1/2" PVC Socket - Female. The drain is opened by pulling up and slightly twisting the drain cover. The drain is closed by slightly twisting the drain cover allowing it to drop down and seat itself against the strainer body.
 - b) If using an alternative drain assembly, follow the manufacturer's recommended instructions.

Installation: Standard Self-Rimming Continued

- There are four mounting sets included with each pedicure bath to securely mount the bath for a self rimming deck enclosure installation. Each mounting set consists of four (4) flat mounting bars, four (4) threaded rods and four (4) wing nuts (See Image #4). Each pedicure bath has four threaded connectors permanently attached to the underside of the bath to ensure the pedicure bath is securely mounted and fits flush on all sides of the horizontal deck. (See Image #5)



- Align the pedicure bath in the proper position on the deck. Insert and turn the threaded rod into the threaded connector underneath the pedicure bath. (See Image #5) Notice: Be careful not to over-tighten the threaded rods to avoid damaging the pedicure bath surface material. Insert the flat mounting bar onto the threaded rod and align, then tighten the wing nut to secure the flat mounting bar to the underside of the countertop deck (See Image #6). Repeat this procedure in all four corners. The pedicure bath should now be firmly secured to the horizontal deck surface.



- Put a small bead of water resistant caulk around the finished edge of the pedicure bath to prevent moisture from entering between the bath and mounting platform. Wipe away any excess caulk.
- Connect the drain assembly to the piping of the drain outlet.
- Establish Electrical Connection. See Electrical Connections section on Page 5 for 115 V/60 Hz or 230 V/50 Hz connection instructions.
- Install your choice of faucetry.

How to Remove for Service

To remove the bath from a mounting platform that provides access under the unit:

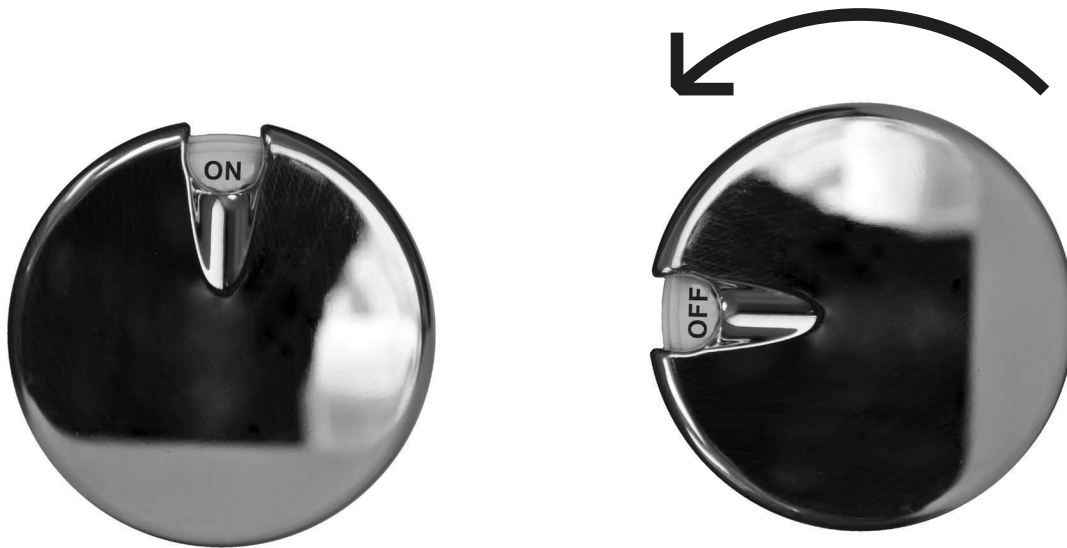
1. Disconnect the unit's power cord and #8 AWG bonding wire.
2. Loosen the compression coupling on the drain pipe.
3. Disconnect the four mounting brackets on the bath from the bottom mounting platform.
4. Cut away any visible caulk from around the deck of the unit.
5. Push up gently from under the bath. Be careful not to apply pressure to the motors or ChromaSoothe lights.

To remove bath from a mounting platform that DOES NOT provide access under the unit:

1. Cut away any visible caulk from around the deck of the unit.
2. Remove the drain cover from the strainer body by removing the chrome knob on the drain cover (twist counterclockwise). Insert a flat ended screwdriver into the brass fitting revealed when the knob is removed. Unscrew the drain cover from the strainer body.
3. Unscrew the strainer body from the drain and seal.
4. Pull the pedicure bath up through the mounting platform and disconnect the unit's power cord and #8 AWG bonding wire. Be careful not to apply pressure to the motors or ChromaSoothe lights.

Operating Instructions

1. After the pedicure bath has been properly installed, fill the unit with water, at the desired temperature, 1 in (3 cm) above the jets.
2. Verify that the unit's electrical cord is connected to a GFCI protected electrical outlet.
3. To start or stop this appliance turn the dial switch to the ON or OFF position.



Quarter-turn Counter Clockwise

4. Bath additives , including oil based products , can be used in a SANIJET Pipeless™ Pedicure Bath, since their residue can be easily cleaned. CAUTION: Use only low foaming additives, and do not use products that contain sand or silicates.
5. You should always be in a seated position when placing your feet into or removing them from the pedicure bath.
WARNING: NEVER STAND IN THE PEDICURE BATH BASIN.

Dry Run Protection

IMPORTANT

- BEFORE USE check the magnetic impeller rotor is properly installed in the case motor assembly.
- BEFORE USE make sure that water is filled to at least 1 in (3 cm) above the jets for proper operation.
- DO NOT attempt to activate the jets on the Pipeless™ pedicure bath without water present.

DRY RUN PROTECTION

The Pipeless™ Pedicure Foot Bath is equipped with an advanced Dry Run Sensor to ensure water is present for proper jet operation. When the motor is turned ON and no water is present, the motor will run in the “no load” condition for 30 seconds then shut off for 15 seconds . After 15 seconds the motor will turn back ON. If the motor does not sense a load after 8 seconds, it will shut off again for another 15 seconds . The motor will repeat this sequence a total of 10 times before going into standby mode. Resetting the motor requires cycling the main power to the motors OFF and then back ON. (unplug system and wait 5 seconds, then plug power supply back in again)

SAFETY SHUTOFF SENSOR

The Pipeless™ Pedicure Bath is equipped with a safety shutoff sensor. The jet assemblies must be properly installed for use and will not operate if not aligned or assembled correctly.

The jet assemblies must be properly locked in “run” position at the 3 or 9 o'clock position to operate.

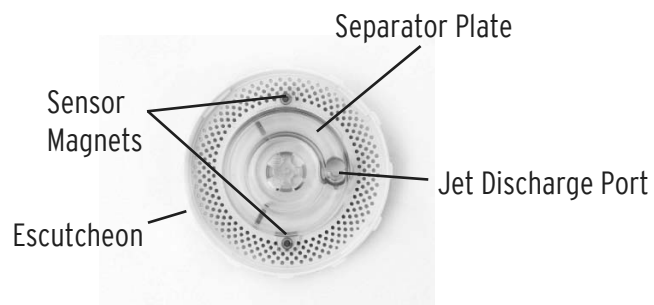
3 o'clock
“run” Position



9 o'clock
“run” Position

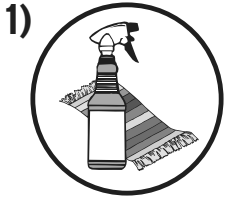


The separator plate must be properly installed in the escutcheon to operate.



Cleaning and Care

IMPORTANT! COMPLETE DISINFECTION REQUIRES TWO DISTINCT STEPS



Remove residue with thorough and effective cleaning.



Disinfection: Apply an EPA registered disinfectant, covering 100% of all surface areas for the required contact time, to kill bacteria, viruses and fungi.

PREPARATION & CLEANING

- Drain the bathing well of all water.
- Rotate the jet assembly to remove from jet case.
- Remove the magnetic impeller rotor from jet case.
- Disassemble the jet assemblies (2 pieces each) and place them in the sink. Use a non-abrasive antibacterial cleaner to remove any visible residue. Rinse with fresh water.
- Use a non-abrasive antibacterial cleaner to clean the bathing vessel, jet cases, drain stopper and overflow mechanism. Rinse with fresh water.

DISINFECTION

- Spray the surface area of the jet assemblies and bathing vessel until thoroughly coated with an EPA-registered disinfectant.
- Allow to set for the required disinfection contact period (refer to manufacturer's specifications) then rinse surfaces with fresh water.

REASSEMBLY

- Dry the jet assemblies and bathing vessel.
- Reassemble and place jets in the 3 or 9 o'clock "RUN" position to operate.

WARNING: Do not release magnetic impeller rotor prior to seating properly into the jet case.
SNAPPING INTO PLACE WILL CAUSE DAMAGE



IMPORTANT

- Always refer to your state and local guidelines for cleaning requirements.
- NEVER USE abrasive cleaners on any surface area.
- After each use, disinfect the system with the recommended disinfection procedures for maximum sanitation.
- BEFORE USE check the jet assembly is properly installed in the case motor assembly.
- BEFORE USE make sure that water is filled to at least 1" above the jets for proper operation.
- DO NOT attempt to activate the Pipeless™ Pedicure Bath without water present.
- TO RESET, unplug the system and wait 5 seconds, then plug back in.

ADDITIONAL NOTES

- SANIJET Pipeless™ Hydromassage system cleaning and disinfection takes approximately 5 minutes when using Dispatch® Hospital Cleaner Disinfectant with Bleach.
- SANIJET's Pipeless™ pedicure baths do not require a "fill and drain cycle" during disinfection, for improved water conservation.
- For applications requiring quick cleaning between treatments, we recommend a second set of "clean" jet assemblies for quick replacement.

RECOMMENDED CLEANER / DISINFECTANT

SANIJET recommends the use of DISPATCH® Hospital Cleaner Disinfectant with Bleach - EPA Reg. No. 56392-7; EST. No. 62801-MI-001. Kills bacteria and viruses in 1 minute and tuberculosis in 30 seconds. Available in 32 oz trigger spray and 64 oz refill bottle.

Troubleshooting

NO POWER / NOT OPERATING

1) Power Supply

Note: Recommended that all electrical service connections be made by a licensed electrician.

- a. Ensure switch box power cord is properly plugged into an operational 115 VAC, GFCI power supply.
- b. For 230 V units with junction box, verify hard wire connections are secure.
- c. Check GFCI reset and circuit breakers for 115 V or 230 V units.

2) Dry Run Sensor Reset

Note: A dry run sensor automatically resets the Pipeless™ Pedicure Bath if no water is present, or if unit had been inadvertently turned or left on.

- a. DO NOT OPERATE JET SYSTEM WITHOUT WATER FILLED AT LEAST 1 in (3 cm) ABOVE THE JETS.
- b. Reset the motor by unplugging the system, waiting 5 seconds, then plugging system back in again.

3) Jet Assembly Alignment

- a. Check jet assembly is locked in the 9 o'clock or 3 o'clock "run" position in the jet motor case.
- b. Ensure magnetic impeller rotor is correctly installed in the jet motor case.
- c. Inspect separator plate to ensure proper assembly in the jet escutcheon.
- d. Inspect separator plate to ensure magnets (2) are present and properly installed.

EXCESSIVE NOISE

- 1) Remove jet assembly (escutcheon and separator plate) and inspect for dirt buildup, debris or damage. Clean or replace if necessary.
- 2) Remove magnetic impeller rotor and inspect for dirt buildup or debris. Clean or replace if necessary.
- 3) Switch impeller rotor to other jet to test.
Note: Jet assembly must be reassembled and water refilled 1 in (3 cm) above jets for proper test.
- 4) If noise persists, contact your distributor for motor replacement information.

SANIJET®
PIPELESS HYDROMASSAGE

SANIJET® Customer Service Department

Toll Free: 877-934-0477 Toll Free Fax: 214-352-0348 E-mail: info@sanijet.com

6200 Maple Avenue Dallas, Texas 75235 sanijet.com